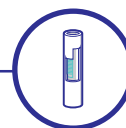




FIELD
PROVEN



SLIM
DESIGN



HIGH
PERFORMANCE

SEMI-FLUSH PREMIUM
CONNECTION
STRONG, RELIABLE
AND EASY TO RUN

- MORE THAN 25
YEARS OF FIELD
EXPERIENCE

- EXTENSIVELY
TESTED AS PER API
RP 5C5 PROTOCOL

VAM® SLIJ-II

FROM CONVENTIONAL TO HPHT

VAM® SLIJ-II is the reference semi-flush premium connection in the industry praised for its versatility with over 25 years of field service. Its optimized design features make it easy to run, whatever the application or environment. From conventional onshore to HP/HT offshore fields, for maximum clearance and optimum joint strength, VAM® SLIJ-II is the ideal solution.

PERFORMANCE

- Internal & External pressure rating: 100% pipe body
- Collapse rating: 100% API 5C3
- Tension capacity: up to 80% pipe body
- Compression capacity equal to 70% of the joint strength
- Bending capacity up to 20°/100 ft under combined loads
- Excellent jump-out resistance with 10 degree hooked load flank
- Unique thread design optimizes stresses throughout the connection to ensure optimal structural integrity
- Sealability validated to API RP 5C5 protocol, field proven in deepwater wells

APPLICATIONS

- Production and intermediate casing
- Production tie-back and liners
- Contingency strings

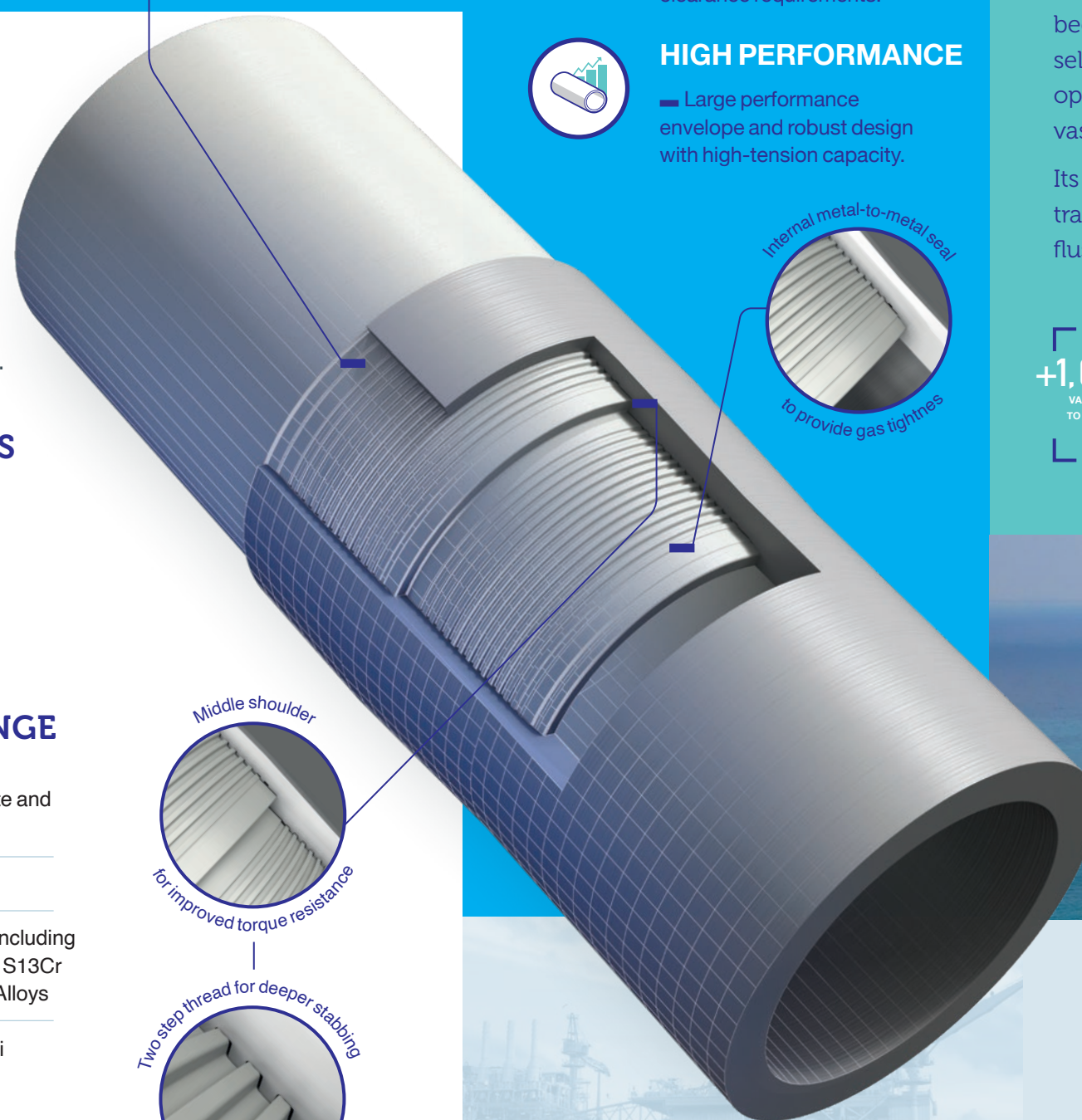
PRODUCT RANGE

Pipes: Standard, alternate and special drifts

OD: From 4-1/2" to 16"

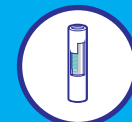
Grades: Carbon Steels, including SS and HC grades, 13Cr, S13Cr and Corrosion Resistant Alloys

YS: From 80 ksi to 140 ksi



FIELD PROVEN

Extensive track records on a wide variety of fields and applications including deepwater wells.



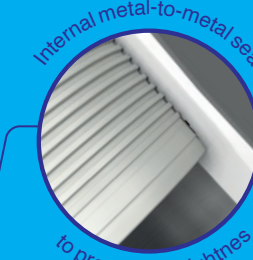
SLIM DESIGN

Best compromise between design efficiency and tight clearance requirements.



HIGH PERFORMANCE

Large performance envelope and robust design with high-tension capacity.



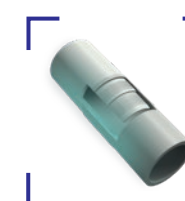
CUSTOMERS KEEP COMING BACK

Trusted again and again, VAM® SLIJ-II has been run worldwide by major operators, selected for its high performance, smooth operations and the back-up provided by our vast licensees network.

Its continuous usage confirms its successful track record, making it our best-seller semi-flush connection.

+1,000,000
VAM SLIJ-II SUPPLIED
TO MAJORS AND IOCS
WORLDWIDE

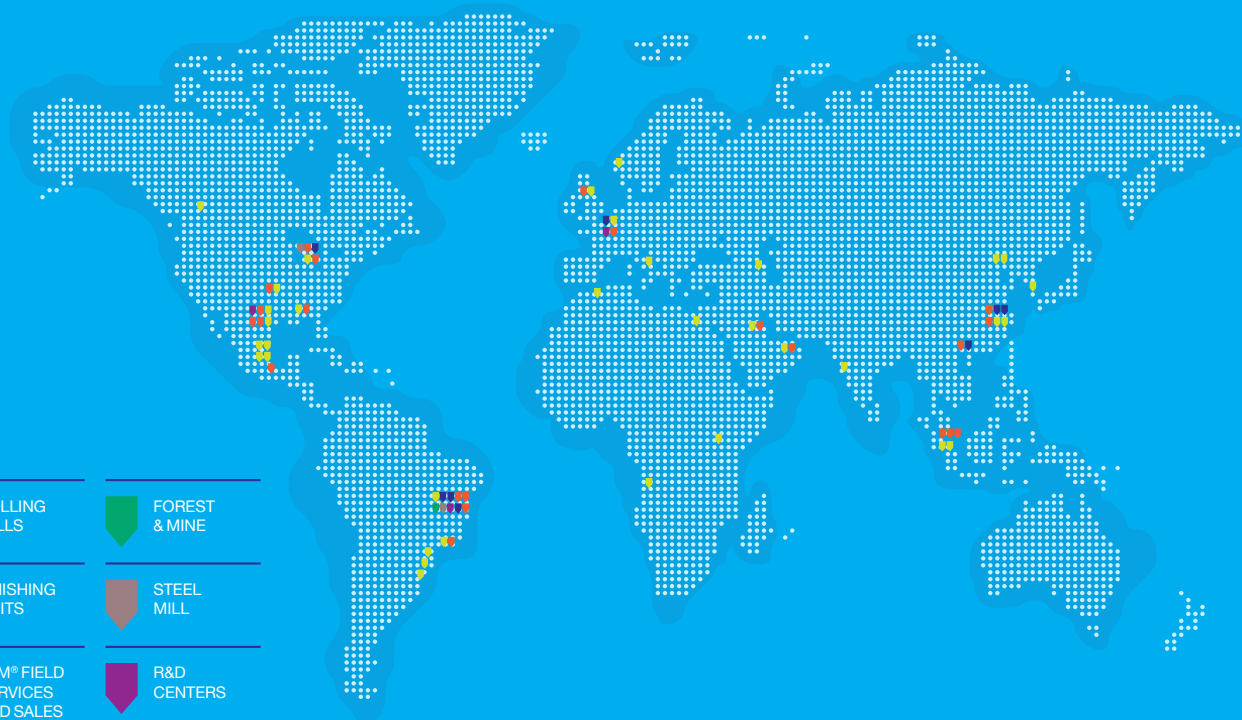
60+
LICENSEES TO
ENSURE GLOBAL
CUSTOMER
SUPPORT



VAM® SLIJ-3

Looking for even stronger semi-flush casing, with higher compression loads and API RP RC5:2017 CAL IV compliance? Check out our VAM® SLIJ-3 product line!

YOUR PARTNER, SETTING
THE PACE FOR INNOVATION
AND PERFORMANCE
EVOLUTION



NEED MORE
INFORMATION?

Information is available online on
solutions.vallourec.com or by
scanning the following QR code.



solutions.vallourec.com



contact@vallourec.com
Headquarters

12, rue de la Verrerie
92190 Meudon - FRANCE
Phone: +33 1 49 09 35 00
www.vallourec.com